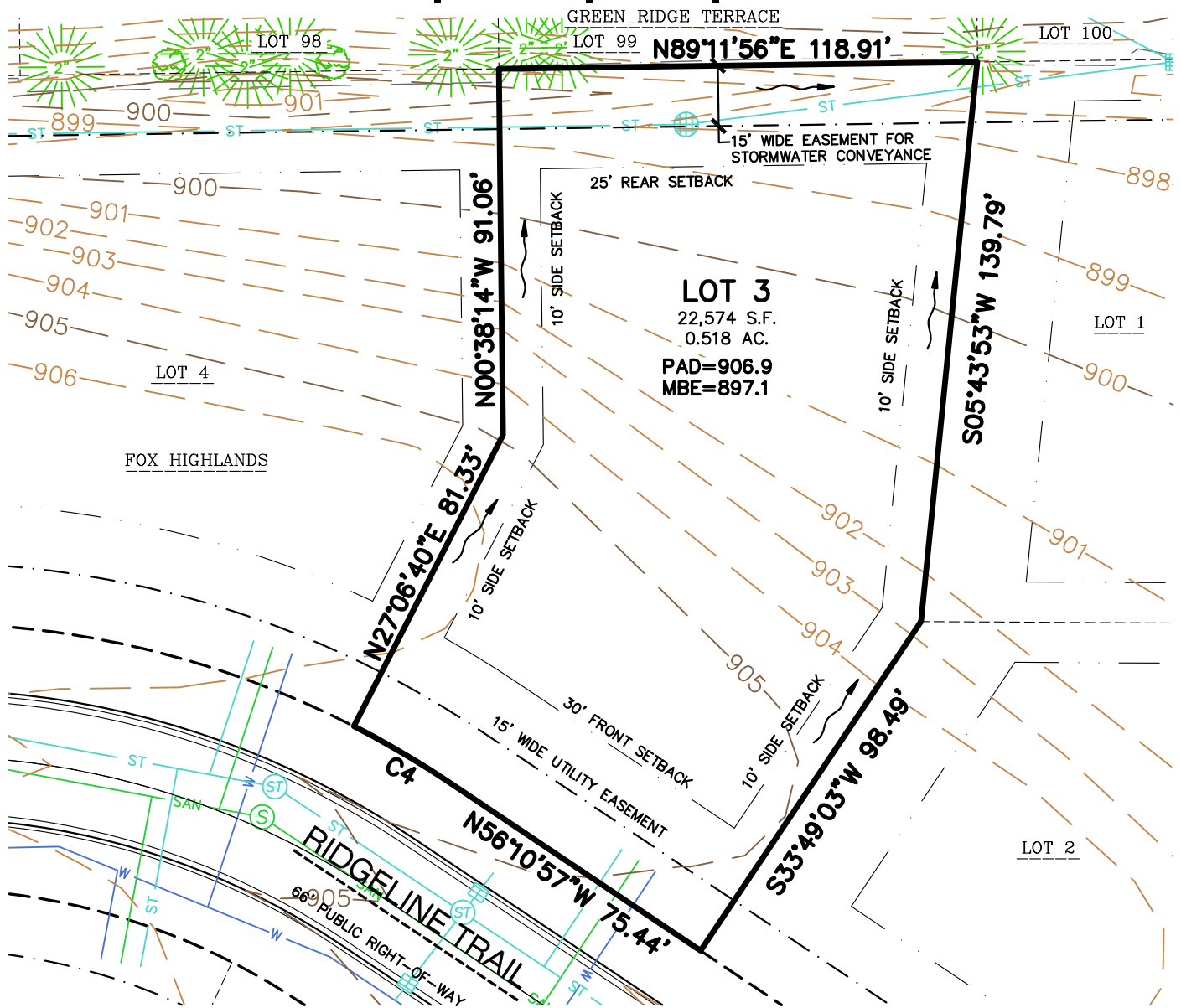


LOT NUMBER	Lot 3
LOT PRICE	\$75,900
LOT SIZE	22,574 square feet
ADDRESS	Ridgeline Trail
MUNICIPALITY	Town of Greenville, WI
SCHOOL DISTRICT	Hortonville Area Schools

The **Town of Greenville** offers residents the ideal blend of rural community and urban connectivity. The **Fox Highlands** subdivision offers large home sites and is located just minutes from Appleton, the Appleton International Airport, and the Fox River Mall. Home sites in **Fox Highlands** feature connectivity to existing subdivisions, parks, and trails offering residents year-round recreational opportunities.





CURVE TABLE

CURVE	RADIUS	DELTA	CHORD BEARING	CHORD	ARC LENGTH
C4	233.00'	6°42'22"	N59°32'08"W	27.26'	27.27'

LEGEND

- SUBJECT LOT LINE**
- CENTERLINE**
- RIGHT-OF-WAY LINE**
- SETBACK LINE**
- PROPERTY LINE**
- EASEMENT LINE**
- CONCRETE CURB & GUTTER**
- DRAINAGE ARROWS**

- 905— INDEX CONTOUR**
- 904— INTERMEDIATE CONTOUR**
- PAD** MINIMUM BUILDING AREA ELEVATION
- MBE** MINIMUM BASEMENT ELEVATION

NOTE:
CONTOURS SHOWN ARE PROPOSED.

