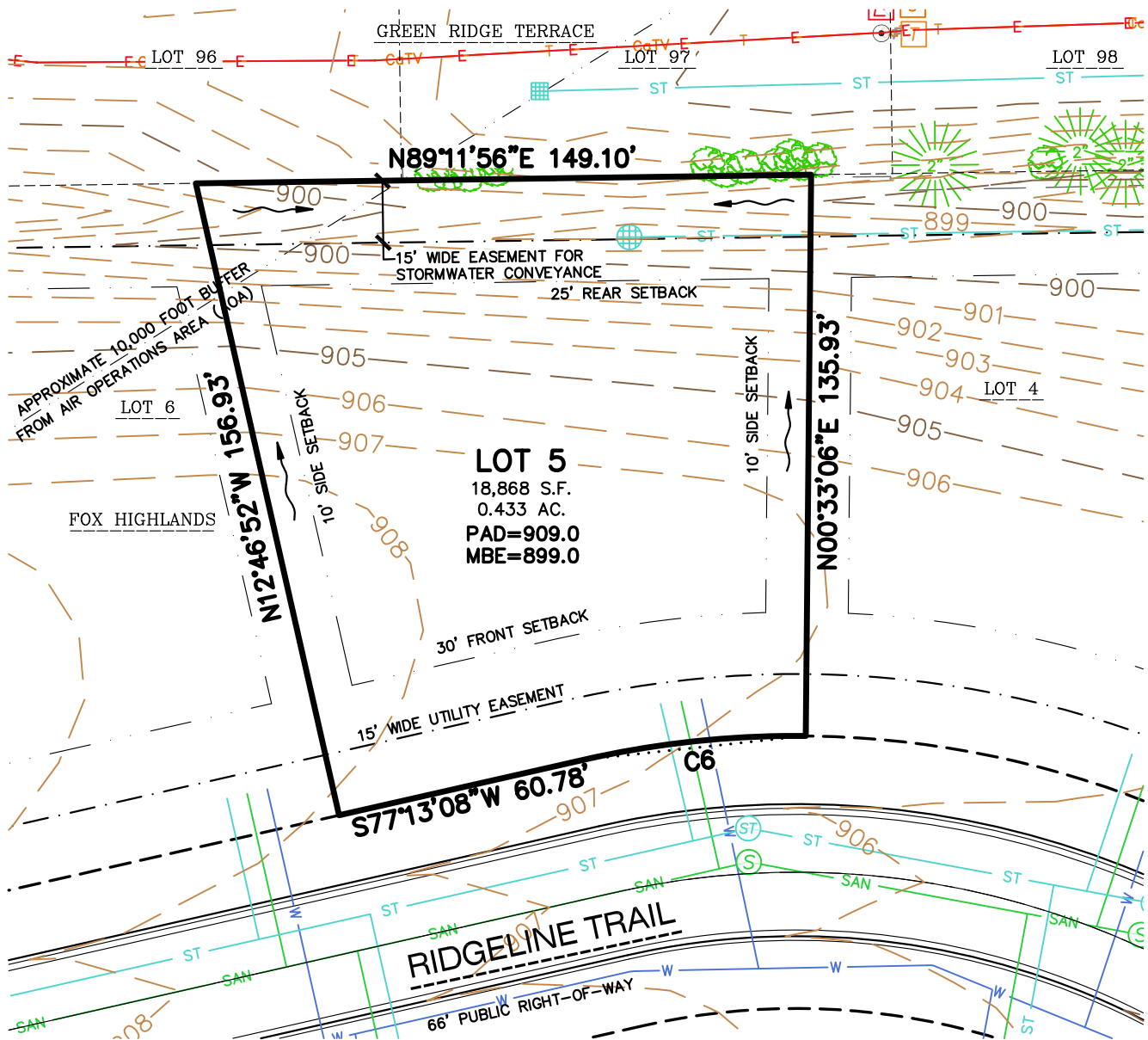


<b>LOT NUMBER</b>	Lot 5
<b>LOT PRICE</b>	\$75,900
<b>LOT SIZE</b>	18,868 square feet
<b>ADDRESS</b>	Ridgeline Trail
<b>MUNICIPALITY</b>	Town of Greenville, WI
<b>SCHOOL DISTRICT</b>	Hortonville Area Schools

The **Town of Greenville** offers residents the ideal blend of rural community and urban connectivity. The **Fox Highlands** subdivision offers large home sites and is located just minutes from Appleton, the Appleton International Airport, and the Fox River Mall. Home sites in **Fox Highlands** feature connectivity to existing subdivisions, parks, and trails offering residents year-round recreational opportunities.





CURVE TABLE

CURVE	RADIUS	DELTA	CHORD BEARING	CHORD	ARC LENGTH
C6	233.00'	13°19'59"	S83°53'07"W	54.10'	54.22'

## LEGEND

- SUBJECT LOT LINE
- CENTERLINE
- RIGHT-OF-WAY LINE
- SETBACK LINE
- PROPERTY LINE
- EASEMENT LINE
- CONCRETE CURB & GUTTER
- DRAINAGE ARROWS

- 905 INDEX CONTOUR
- 904 INTERMEDIATE CONTOUR
- PAD** MINIMUM BUILDING AREA ELEVATION
- MBE** MINIMUM BASEMENT ELEVATION

**NOTE:**  
CONTOURS SHOWN ARE PROPOSED.

