

# Fox Highlands

GREENVILLE, WI



*Fox Highlands*

— GREENVILLE, WI —

A residential development in Greenville, WI

## Contact

Forward Development Group, LLC  
161 Horizon Drive, Suite 101A  
Verona, WI 53593  
608.848.9050

## Single Family Home Sites

[www.foxhighlands.com](http://www.foxhighlands.com)

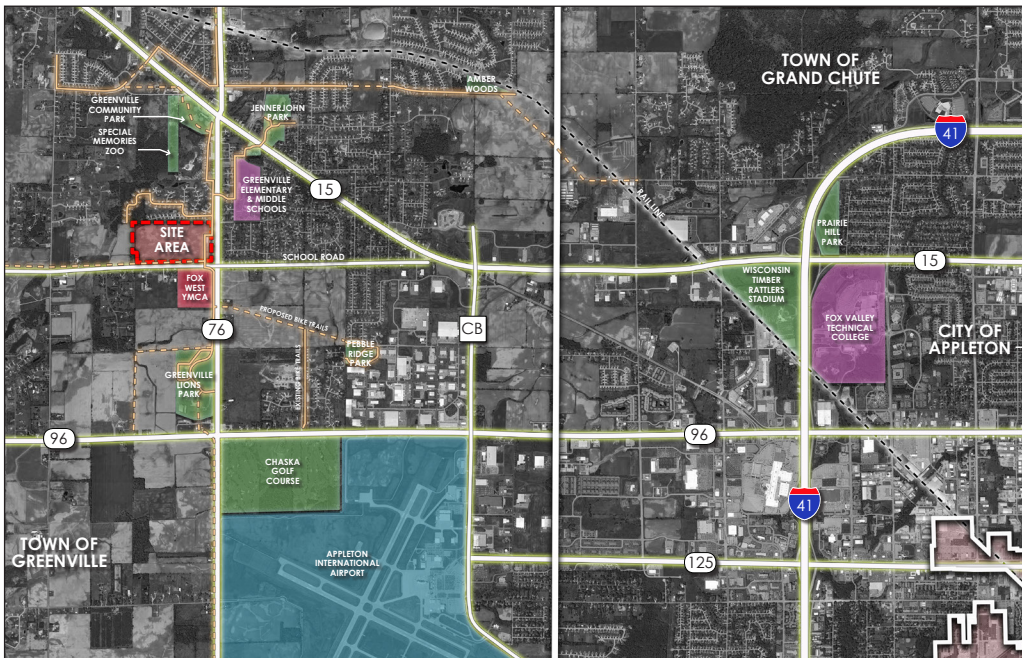
## Forward Development Group

[www.forwarddevgroup.com](http://www.forwarddevgroup.com)



## COMMUNITY PROFILE

### Town of Greenville, WI



The town of Greenville, WI is one of 18 communities that form the basis of the Fox Cities; the third largest metropolitan area in Wisconsin. The Town of Greenville is located west of Appleton and south of Green Bay.

The town of Greenville is a rapidly growing community located west of the city of Appleton. Greenville enjoys a unique mix of agriculture, local business, and residential areas. There are three main highways running through the town (Highways 15, 96, and

76) and there exists easy access to the Appleton International Airport which is located in Greenville. Surrounding the airport are business parks which serve many of the town's largest employers.

The School District for Greenville is a compelling factor for a potential home / lot buyer. The Hortonville Area school district achieved an Overall Accountability Score and Rating "Exceeds Expectations" with the Wisconsin Department of Public Instruction for 2013/2014. In specific areas of Student Achievement and On-Track and Postsecondary Readiness, Hortonville Area School District outperformed both Appleton and overall state average scores.



Image by Wimmers

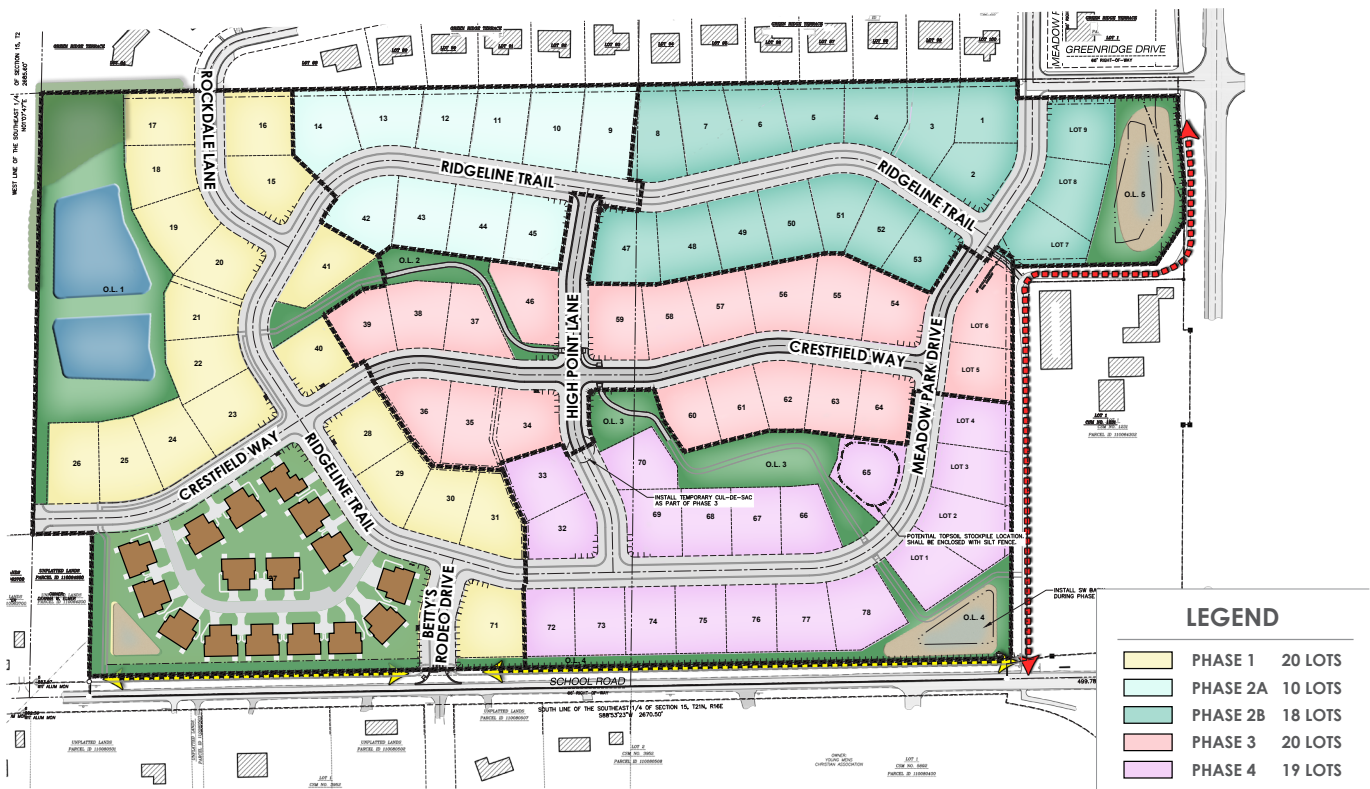


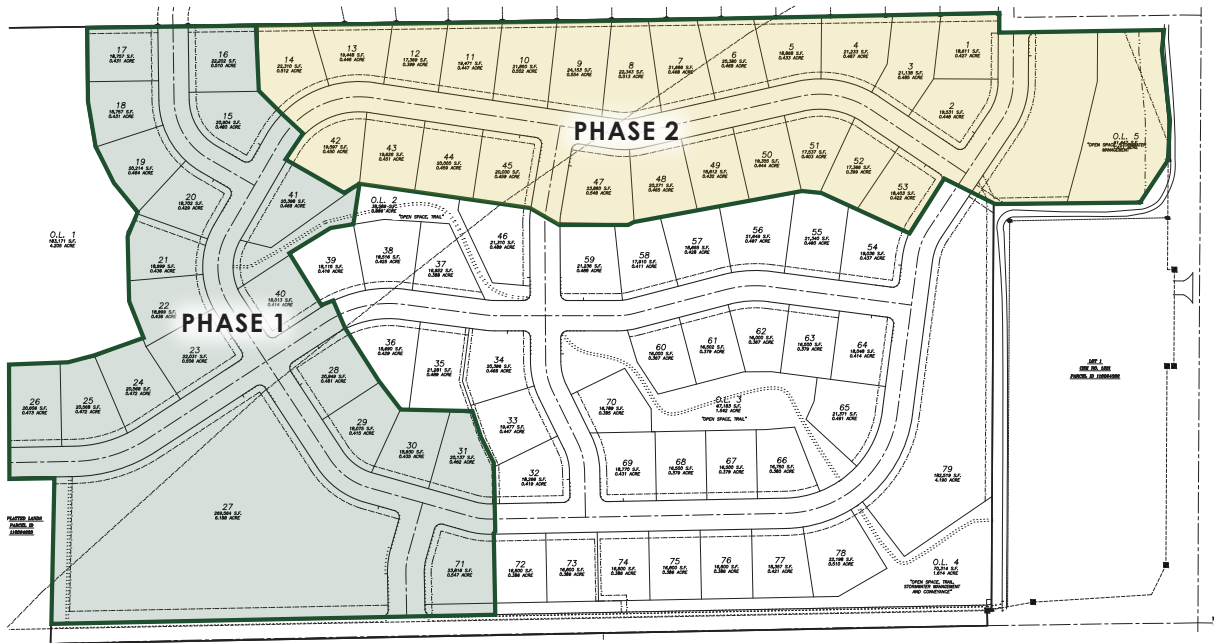
## FOX HIGHLANDS

### SINGLE FAMILY HOME SITES

- **Available Lots:** 77
- **Lot Sizes:** 16,000 – 23,880 sq. ft.
- **Lot Price Range:** \$58,900 – \$79,900
- **Municipality:** Town of Greenville, WI
- **School District:** Hortonville Area Schools
- Sewer and Water
- Protective Covenants
- Internal Multi-Use Trails & Centralized Public Greenway

The **Town of Greenville** offers residents the ideal blend of rural community and urban connectivity. The **Fox Highlands** subdivision offers large home sites and is located just minutes from Appleton, the Appleton International Airport, and the Fox River Mall. Home sites in **Fox Highlands** feature connectivity to existing subdivisions, parks, and trails offering residents year-round recreational opportunities.





## FOX HIGHLANDS - PHASE 1 & 2 - SUBDIVISION PRICING

Note: Prices are subject to change without notice. All exposures must be verified with a professional builder.

### PHASE 1

HOME SITE #	LIST PRICE
15	SOLD
16	SOLD
17	SOLD
18	SOLD
19	SOLD
20	SOLD
21	SOLD
22	SOLD
23	SOLD
24	SOLD
25	SOLD
26	SOLD
28	\$68,900
29	SOLD
30	SOLD
31	SOLD
40	\$68,900
41	SOLD
71	UNDER CONTRACT

### PHASE 2

HOME SITE #	LIST PRICE
1	\$69,900
2	\$69,900
3	\$75,900
4	\$75,900
5	\$75,900
6	\$77,900
7	SOLD
8	\$77,900
9	SOLD
10	SOLD
11	\$77,900
12	\$77,900
13	SOLD
14	SOLD
42	\$73,900
43	\$75,900
44	SOLD
45	\$75,900
47	\$75,900
48	\$75,900
49	\$75,900
50	\$75,900
51	\$75,900
52	\$75,900
53	\$73,900